

Ride Name: Up To The Lake
Grade: Moderate/Beginner
Map Required: OS Explorer 264
Total Distance: 42.0Km (approx.)
Approx. Ride Time: 4hrs
Total Height Climbed: 500m

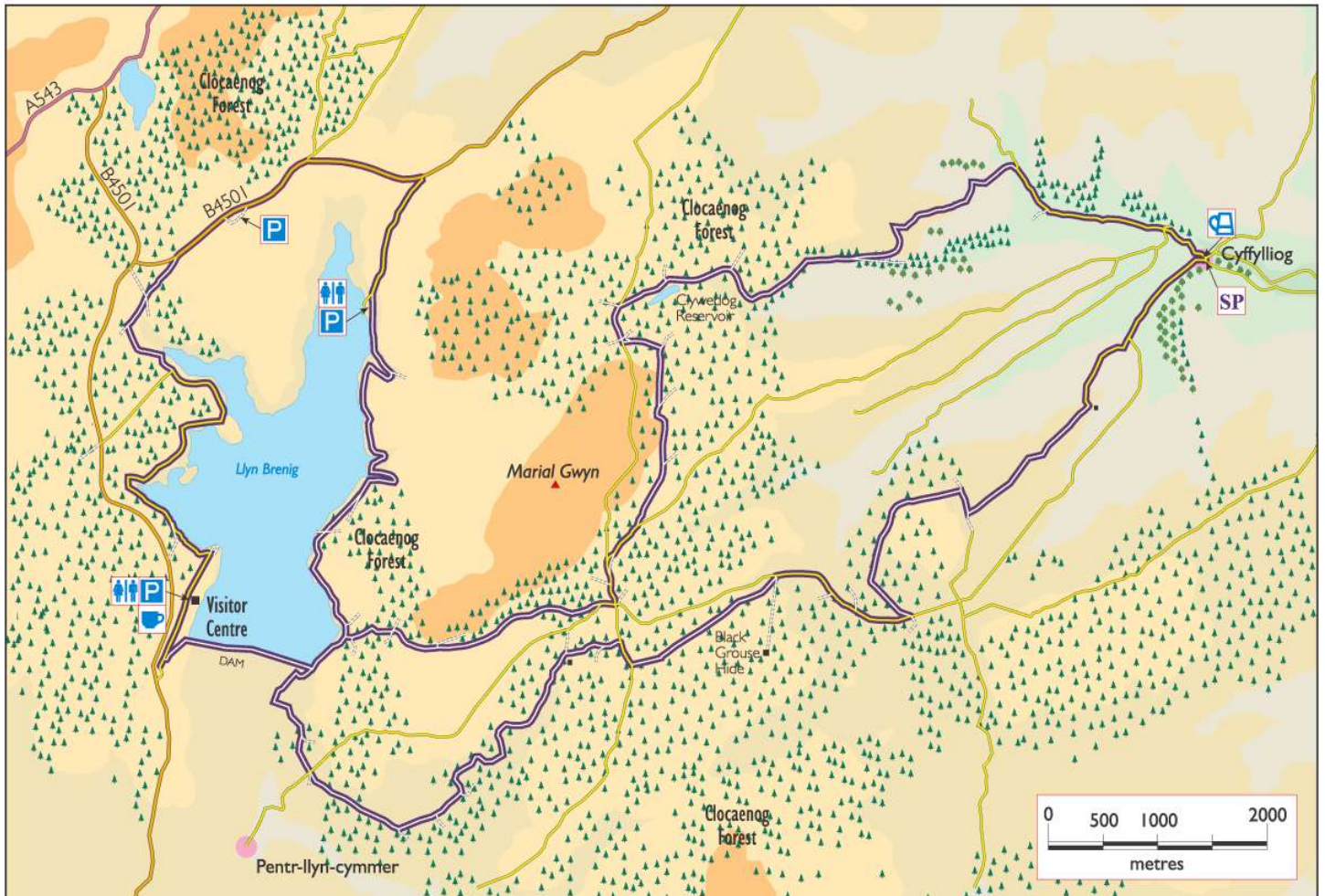
Cycling Legend

ROUTE A road B road C road Track










The route is shown as a broad purple line with the type of road and surface inset.

----- Other Bridleway

These maps are based on the 1947 OS 1" to 1 mile map, and updated from ground/bike surveys and aerial photography. © Denbighshire County Council 2003. It is recommended that you purchase the latest OS Explorer map or more detailed mapping.



Key to symbols

 Start Point	 Pub	 Post Box	 Cafe	 Farm
 Car Parking	 Cattle Grid	 Information	 Public Telephone	

Symbol	Description	Distance (Km)
SP	Park in centre of Cyffylliog. Head south west out of village uphill. At fork in road go straight on up steep hill past small turning on right. Follow road to end, bear right through gate at house.	1.0 1.8
	Continue to follow track up to forest. At junction with forest road turn right then take first left uphill.	3.3
	At junction with road turn right.	5.3
	Continue along road, taking 2nd forest road on left.	6.6
	Continue to road, turn right then 1st left onto forest road.	8.2
	Bear right at fork in track.	8.6
	Bear left at T-junction next to house.	9.0
	Bear left at fork.	10.8
	Turn right at junction.	11.0
	Continue past 2 left turns until meeting surfaced road. Cross straight over.	12.6
	Continue to end of track, go through gate and follow track to next gate.	13.3
	At junction with track turn right and head up to the dam wall.	13.5
	At top of climb continue around the lake in an anti-clockwise direction.	13.8
	Upon meeting surfaced road, follow away from lake to junction with main road. Turn left.	18.5
	Follow main road to brow of hill and bear left on large track. Turn right at T-junction with smaller track and descend to gate.	21.6

At gate continue straight on, onto surfaced road, passing junction on left and over bridge, bear left at next junction.	22.5
Continue past junction on right.	23.7
At fork in road bear left along shore. Beware of oncoming traffic!	26.2
Pass visitor centre and Café.	27.0
Turn left at junction and ride over the top of the dam wall.	27.6
At the end of the dam wall turn left and follow shoreline.	29.0
Turn right into forest over cattle grid and immediately bear right at fork in track.	29.5
Continue straight over crossroads.	29.9
At next junction turn left and continue to climb.	30.4
At junction with surfaced road turn left then 1st right.	32.2
Turn left.	32.8
Turn left at fork in road.	34.0
At next junction turn left.	34.5
At surfaced road turn right.	34.9
Take left turn on to forest road. Past lake on right.	35.3
At next junction bear right.	35.7
Go through gate out of forest. Bear right.	37.5
Turn right at junction.	38.6
At junction with road turn right.	40.0
Bear left at junction.	41.5
Finish back in Cyffylliog.	42.0